

Handy URLs for Stock Analysis Software... (help from the pros)

Bob Adams – Director InvestEd, Inc
Associate Director, Puget Sound Chapter, BI
bob.at.seattle@gmail.com
www.bob-adams.net

Copyright 2007-2010 Bob Adams

3

Take full advantage of your IClub software

➤ Do you *always* check all sources for SSG info.

- 1 Analysts—EPS growth estimate for next 5 years
- 2 Analysts—Yearly EPS estimates for next 5 years
- 3 Analysts—EPS and Sales quarterly estimates
- 4 Industry Averages comparison
- 5 Help in setting the projected low price
- 6 Insider Ownership
- 7 Institutional Ownership Competitor comparison
- 8 Who are Competitor Companies – Compare
- 9 Company news
- 10 Intrinsic Value (Discounted Cash Flow)

4

Take full advantage of your analysis software

- Do you *always* check all sources for SSG info.?
- Your software will help
 - HOW?

Two key clicks

5

Two key clicks—

- 1 Analysts—EPS % growth estimate for next 5 years: www.money.msn.com
- 2 Analysts—Yearly EPS estimates for next 5 years and Quarter estimates: www.NASDAQ.com
- 3 Analysts—EPS and Sales quarterly estimates: www.finance.yahoo.com
- 4 Industry Averages – compare your company: www.iclub.com

6

Two key clicks—

- 5 Help in setting the projected low price:
At what price do investors start buying:
www.stockcharts.com
When did the 52 week low occur:
www.finance.yahoo.com
- 6 Insider Ownership:
www.finance.yahoo.com
- 7 Institutional Ownership:
www.finance.yahoo.com

7

Two key clicks—

- 8 Who are competing companies and a comparison:
www.finance.yahoo.com
- 9 Company news:
www.money.msn.com
- 10 Intrinsic Value (Discounted Cash Flow)
http://www.gurufocus.com/fair_value_dcf.php?symbol=

Handy URLs for Stock Analysis Software
Bob Adams – bob.at.seattle@gmail.com -- www.bob-adams.net

8

Two key clicks—

- What's the Advantage
 - Don't need to remember ticker symbol
 - Automatically finds data for company open
 - Organizes your research
 - Step one, Step two, Step three...
 - Help available for "Judgment" decisions

- Let's look at a few

	Current Qtr. Sep 10	Next Qtr. Dec 10	Current Year Dec 10	Next Year Dec 11
Earnings Est				
Avg. Estimate	1.70	2.99	9.93	12.07
No. of Analysts	15.00	15.00	16.00	17.00
Low Estimate	1.68	2.89	9.81	11.56
High Estimate	1.72	3.12	10.05	12.75
Year Ago EPS	1.21	2.32	7.60	9.93
Revenue Est				
Avg. Estimate	145.96M	185.39M	648.34M	786.42M
No. of Analysts	14	14	17	17
Low Estimate	143.22M	182.00M	642.17M	763.90M
High Estimate	147.50M	190.10M	654.80M	822.90M
Year Ago Sales	114.35M	147.20M	511.96M	648.34M
Sales Growth (year/est)	27.60%	25.90%	26.60%	21.30%

EPS Revisions	Current Qtr. Sep 10	Next Qtr. Dec 10	Current Year Dec 10	Next Year Dec 11
Up Last 7 Days	0	0	0	0
Up Last 30 Days	0	0	0	0
Down Last 30 Days	0	0	0	0
Down Last 90 Days	N/A	N/A	N/A	N/A

Growth Est	STRA	Industry	Sector	S&P 500
Current Qtr.	40.50%	22.80%	37.30%	31.50%
Next Qtr.	28.90%	30.80%	47.40%	83.30%
This Year	30.70%	36.60%	39.70%	43.20%
Next Year	21.60%	21.40%	25.80%	15.20%
Past 5 Years (per annum)	28.56%	N/A	N/A	N/A
Next 5 Years (per annum)	17.70%	13.68%	14.33%	10.64%

Price/Earnings (avg. for comparison categories)	17.36	19.11	20.03	14.57
PEG Ratio (avg. for comparison categories)	0.98	1.82	1.29	1.79

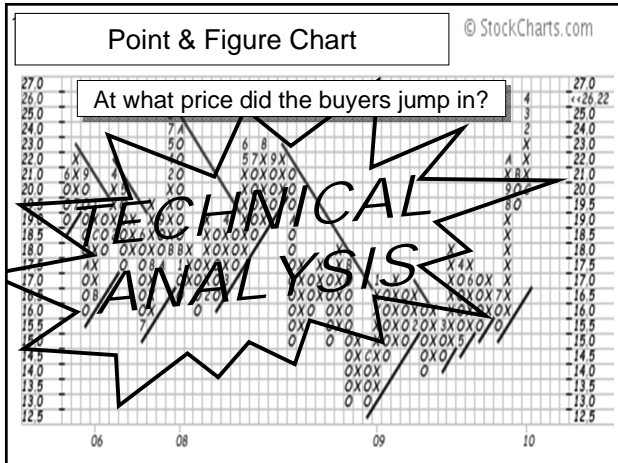
Fiscal Quarter End	Consensus EPS* Forecast	High EPS* Forecast	Low EPS* Forecast	Number of Estimates	Over the Last 4 Weeks Number of Revisions
Sep 2010	1.095	1.72	1.09	15	0
Dec 2010	2.991	3.12	2.89	15	1
Mar 2011	3.323	3.43	3.23	10	0
Jun 2011	3.195	3.33	3.11	10	0
Sep 2011	2.048	2.17	1.90	10	0
Dec 2011	3.634	3.83	3.46	10	1

Fiscal Year End	Consensus EPS* Forecast	High EPS* Forecast	Low EPS* Forecast	Number of Estimates	Over the Last 4 Weeks Number of Revisions
Dec 2010	9.929	10.05	9.81	16	0
Dec 2011	12.122	12.75	11.7	17	0
Dec 2012	14.053	14.36	13.66	3	1

Competitors					
Direct Competitor Comparison					
	STRA	APOL	COCO	DV	Industry
Market Cap:	2.03B	6.83B	471.85M	2.96B	275.45M
Employees:	1,811	52,890	11,500	10,009	1.53K
Qtrly Rev Growth (yoy):	26.50%	27.70%	36.60%	27.90%	9.90%
Revenue (ttm):	578.74M	4.76B	1.76B	1.92B	234.92M
Gross Margin (ttm):	67.92%	56.79%	44.66%	56.87%	59.98%
EBITDA (ttm):	214.12M	1.43B	301.78M	473.12M	39.83M
Operating Margin (ttm):	34.26%	27.68%	13.70%	21.46%	13.15%
Net Income (ttm):	120.56M	601.67M	145.97M	279.91M	N/A
EPS (ttm):	8.77	3.90	1.65	3.87	0.54
P/E (ttm):	17.09	11.86	3.25	10.79	15.47
PEG (5 yr expected):	0.74	0.52	0.46	0.50	0.49
P/S (ttm):	3.46	1.43	0.25	1.52	1.40

APOL = Apollo Group Inc.
 COCO = Corinthian Colleges Inc.
 DV = DeVry, Inc.
 Industry = Education & Training Services





Industry Averages: IClub Central

► Industry Averages for:

- Average 5 year PTP/Sales –
 - SSG (2-A)
- Average 5 year ROE –
 - SSG (2-B)
- Average Debt to Equity –
 - SSG (2-C)

Go ahead. Make money.™

IClub Central
 STOCK AND INVESTMENT CLUBS

HOME PRODUCTS SUPPORT CLUBS INVESTING
 COMPLETE SSG TUTORIAL RESOURCES INVESTOR ADVISORY SERVICE

Home furnishings

Industry Averages

Industry averages are provided here to help you evaluate the quality of a company's management, including such important measures as:

Part 2A - % Pre-tax Income on Revenues or % Pre-tax Profit on Sales. This pre-tax profit margin measures how well management converts sales dollars into profits before taxes.

Part 2B - % Return on Equity. This measures how well management produces a profit from the money invested by the shareholders.

We have also provided averages for Debt/Equity, 5 Year Revenue Growth, 5 Year EPS Growth, PE, and EPS Predictability (R2) for all industries. These items can serve as a quick reference for comparing company growth to the industry growth average. This is useful information when evaluating a company and can help you gauge how well the management is performing in relative terms.

Industry	Aug 5Yr PTP / Sales	Aug 5Yr ROE	Aug Debt / Equity	Aug 5Yr Rev Growth	Aug 5Yr EPS Growth	Aug PE	Aug EPS Pred (R2)
ADVERTISING	10.5	45.9	65.6	9.5	4.2	57.8	0.67
AEROSPACE & DEFENSE	8.9	14.6	84.7	15.1	10.8	27.5	0.58
AGRICULTURAL PRODUCTS	13.5	13.9	61.7	9.2	8.1	28.0	0.62
AIR FREIGHT & LOGISTICS	4.9	33.6	62.0	17.3	17.2	30.7	0.86
AIRLINES	8.7	19.3	484.4	18.0	7.3	26.3	0.67
AIRPORT SERVICES	35.4	3.1	11.3	4.1	6.6	35.5	0.71
ALTERNATIVE CARRIERS	23.3	174.6	130.5	8.1	0.0	40.3	0.83
ALUMINUM	6.3	15.8	154.1	18.6	19.8	22.6	0.77

Industry	Aug 5Yr PTP / Sales	Aug 5Yr ROE	Aug Debt / Equity	Aug 5Yr Rev Growth	Aug 5Yr EPS Growth	Aug PE	Aug EPS Pred (R2)
FOOTWEAR	9.1	15.4	25.5	12.5	17.8	21.5	0.74
FOREST PRODUCTS	9.0	11.1	74.5	7.2	21.5	24.4	0.77
GAS UTILITIES	8.5	29.6	367.5	16.7	12.2	22.0	0.66
GENERAL MERCHANDISE STORE	6.1	17.6	52.9	9.6	13.4	21.7	0.51
GOLD	24.6	301.2	16.7	11.7	1.5	50.2	0.17
HEALTH CARE DISTRIBUTORS	3.8	4591.2	29.6	9.1	12.5	62.6	0.68
HEALTH CARE EQUIPMENT	16.3	14.2	36.6	17.7	7.7	87.4	0.61
HEALTH CARE FACILITIES	10.2	14.2	191.7	16.8	8.3	26.0	0.57
HEALTH CARE SERVICES	8.6	15.0	59.0	15.4	10.9	32.7	0.67
HEALTH CARE SUPPLIES	14.4	24.7	21.1	15.9	7.1	37.0	0.59
HEALTH CARE TECHNOLOGY	9.2	28.9	33.0	17.5	6.9	67.2	0.53

Industry	Aug 5Yr PTP / Sales	Aug 5Yr ROE	Aug Debt / Equity	Aug 5Yr Rev Growth	Aug 5Yr EPS Growth	Aug PE	Aug EPS Pred (R2)
HEAVY ELECTRICAL EQUIPMENT	5.5	9.4	54.7	4.5	0.0	88.8	0.51
HIGHWAYS & RAIL TRACKS	0.0	0.0	181.1	30.1	0.0	1,000.0	0.00
HOME ENTERTAINMENT SOFTWA	22.0	15.4	33.9	10.0	8.1	45.4	0.79
HOME FURNISHINGS	7.7	20.1	144.2	9.2	5.2	40.3	0.48
HOME IMPROVEMENT RETAIL	10.0	20.2	24.3	12.3	19.0	16.4	0.98
HOMEBUILDING	11.4	19.6	120.2	21.0	19.7	14.2	0.65
HOMEFURNISHING RETAIL	7.1	21.4	25.2	12.2	13.6	43.3	0.68
HOTELS, RESORTS & CRUISE	14.9	34.7	112.5	14.1	8.7	47.0	0.53
HOUSEHOLD APPLIANCES	9.0	17.2	86.8	9.4	9.9	53.5	0.66
HOUSEHOLD PRODUCTS	10.9	31.3	122.3	10.4	13.0	21.5	0.73
HOUSEWARES & SPECIALTIES	9.1	14.7	70.9	14.1	11.3	17.1	0.44

Two key clicks—

Download these and other URLs

- Go to: www.bob-adams.net
- “Misc. URLs for the SSG”
- Download the file for your software

InvestEd
 Investor Education at Its Best™

Welcome to Bobsite
a personal e-site

Who's Bob? I'm a volunteer Director on the Board of InvestEd Inc, a non-profit organization with a goal to help educate investors. I'm also on the Speaker List for Better Investing.

I volunteer to speak at Chapter events throughout the country, speaking on a speaking visit, I'll be paid by the chapter information click [here](#).

If you have a question or comment [email me](#). They help me improve the provided on the site. I always answer email.

—Bob

Misc. URLs for the SSG

Update
 The Annual Report Analysis tool has been updated to version 4.06. This version corrects a problem with the competitor information not being displayed properly for some companies.

Handy URLs for Stock Analysis Software

Bob Adams – bob.at.seattle@gmail.com -- www.bob-adams.net

InvestEd

Welcome to Bobsite

.....a personal e-site

What's this site about?

Recommended Reading

Analyze Ann Rpt. -Mtg

Analyze Ann. Rpt.-Banks

Quick Analysis form

Annualize Your Portfolio

Follow Your Stocks form

Help for Club Officers

Class Handouts & Info

Misc. URLs for the SSG

Mutual Fund Analysis

Helpful Websites

Miscellaneous Websites-useful for the SSG

Below are **Useful Websites** for your SSG software. Instructions are included

Useful Websites

These websites are useful when installed within the Stock Selection Guide (SSG) analysis program. Quickly and easily see data for the company you have open in the SSG program. Instructions for adding this function are contained on the sheet that is downloaded. Additional descriptive information is below.

Note: be sure to download the file below that matches the analysis software you are using.

Option 1: Useful websites for Toolkit versions 4, 5, 6 Download this file to install the website addresses (URLs) manually

Option 2: If using Toolkit 6 -Download [this file](#) to insert the URLs automatically by replacing a file in Toolkit 6. [Click here](#) for step by step instructions.

Useful websites for Stock Analyst and Classic Download this file if using Stock Analyst or Classic

Useful Web Addresses for Toolkit

Below are website Addresses (URL) which can be placed in Toolkit. Once these URLs are installed the data for any company you have open will appear on your computer screen and can be used to further analyze the company. The URLs listed below are specific to Toolkit.

URLs for Toolkit

To use these Sites, open the company you want to study in Toolkit, then click on a URL. The data for that item and company will appear on your computer screen. (You must be online if using a dial-up modem.)

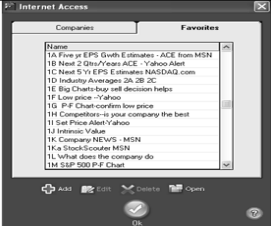
Instructions:
 Highlight a URL below, copy (Ctrl-C) then paste (Ctrl-V) each one into Toolkit, in the area where it allows URLs to be placed. How? - Step by step instructions

Highlight the URL below (blue font) and press Ctrl-C. Open Toolkit and click on the "Web" icon at the top of the screen, select "Manage Web Links". Click on Favorites, then on "Add a site". Paste the URL (press Ctrl-V) where it asks for a Web address. Then type a description or copy and paste the description as well as the URL. Put them in "Favorites" instead of Companies. You may want to delete the URLs already there if using Toolkit 4 or 5 as most are outdated. In Toolkit 6, those preceded by an asterisk cannot be removed or edited.

By adding a number in front of the description the sort will be by number not alphabetically.
 Example of a description: **1 Five year EPS Growth Estimates** or **2 Earnings Estimates** etc.

1A Five year EPS Growth Estimates - ACE from MSN - I normally use these as a limit factor. After establishing the EPS growth for the next 5 years, I look to see if the Analysts Consensus Estimate (ACE) is greater than my estimate. I like to project a little less than the analyst estimates.
http://money.central.msn.com/investor/invsb/analyst/earnest.asp?Page=EarningsGrowthRates&Symbol=S*

1B EPS & Sales - Yahoo - ACE - Quarterly and Yearly estimated data for EPS and Sales are available.
 1. Insert the Quarterly data as actual quarterly data and see where they fall on the SSG graph (Part 1), as an aid to predicting your next 5 years trend line.
 2. Enter the Annual data for the next two years as actual annual data and observe if the historical trend continues. Use both EPS and Sales data. These data must be typed into the appropriate area of Toolkit - Click on "Data" then enter the numbers. If you want to save the information, save it as another copy of the SSG for the company.
http://finance.yahoo.com/q/a?s=S*



Useful Web Addresses for Toolkit

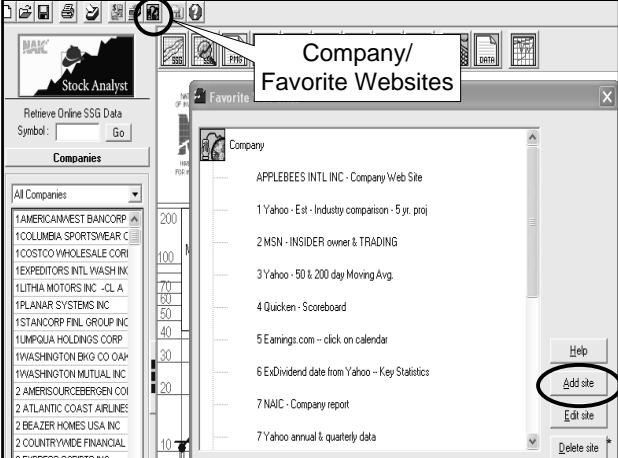
Highlight the URL below (blue font) and press Ctrl-C. Open Toolkit and click on the "Web" icon at the top of the screen, select "Manage Web Links". Click on Favorites, then on "Add a site".

Paste the URL (press Ctrl-V) where it asks for a Web address. Then type a description or copy and paste the description as well as the URL. Put them in "Favorites" instead of Companies.

You may want to delete the URLs already there if using Toolkit 4 or 5 as most are outdated. In Toolkit 6, those preceded by an asterisk cannot be removed or edited.

establishing the EPS growth for the next 5 years, I look to see if the Analysts Consensus Estimate (ACE) is greater than my estimate. I like to project a little less than the analyst estimates.
http://money.central.msn.com/investor/invsb/analyst/earnest.asp?Page=EarningsGrowthRates&Symbol=S*

Company/ Favorite Websites



Company/ Favorite Websites

Add new site

Group:

Site name:

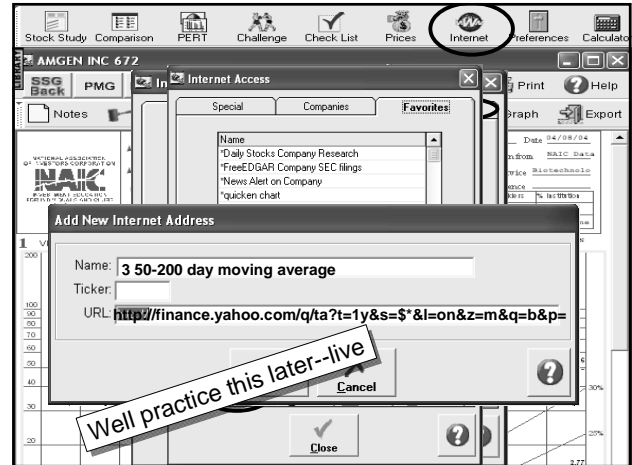
Internet URL:

Internet Access

Favorites

Name
*Daily Stocks Company Research
*FreeEDGAR Company SEC filings
*News Alert on Company
*quicken chart
*Yahoo - 50 and 200 day average chart
*Yahoo - financials
*Yahoo! FINANCE Company Price Quote
American Association of Individual Investors
Bloomberg Online Markets
CBS MarketWatch
CNN in the Financial Network
FinancialWeb.com
FreeEDGAR - free real-time SEC data
InfoBeat e-Mail Finance Services

Handy URLs for Stock Analysis Software
 Bob Adams – bob.at.seattle@gmail.com -- www.bob-adams.net



29

Two key clicks—
 (Data the convenient way)

- > Do It Yourself—
<http://finance.yahoo.com/q/ta?t=1y&s=MSFT&l>
- > NSA or Classic
<http://finance.yahoo.com/q/ta?t=1y&s=<symbol>&l>
- > Toolkit
[http://finance.yahoo.com/q/ta?t=1y&s=\\$*&l](http://finance.yahoo.com/q/ta?t=1y&s=$*&l)

LET'S INSTALL A NEW URL—live
